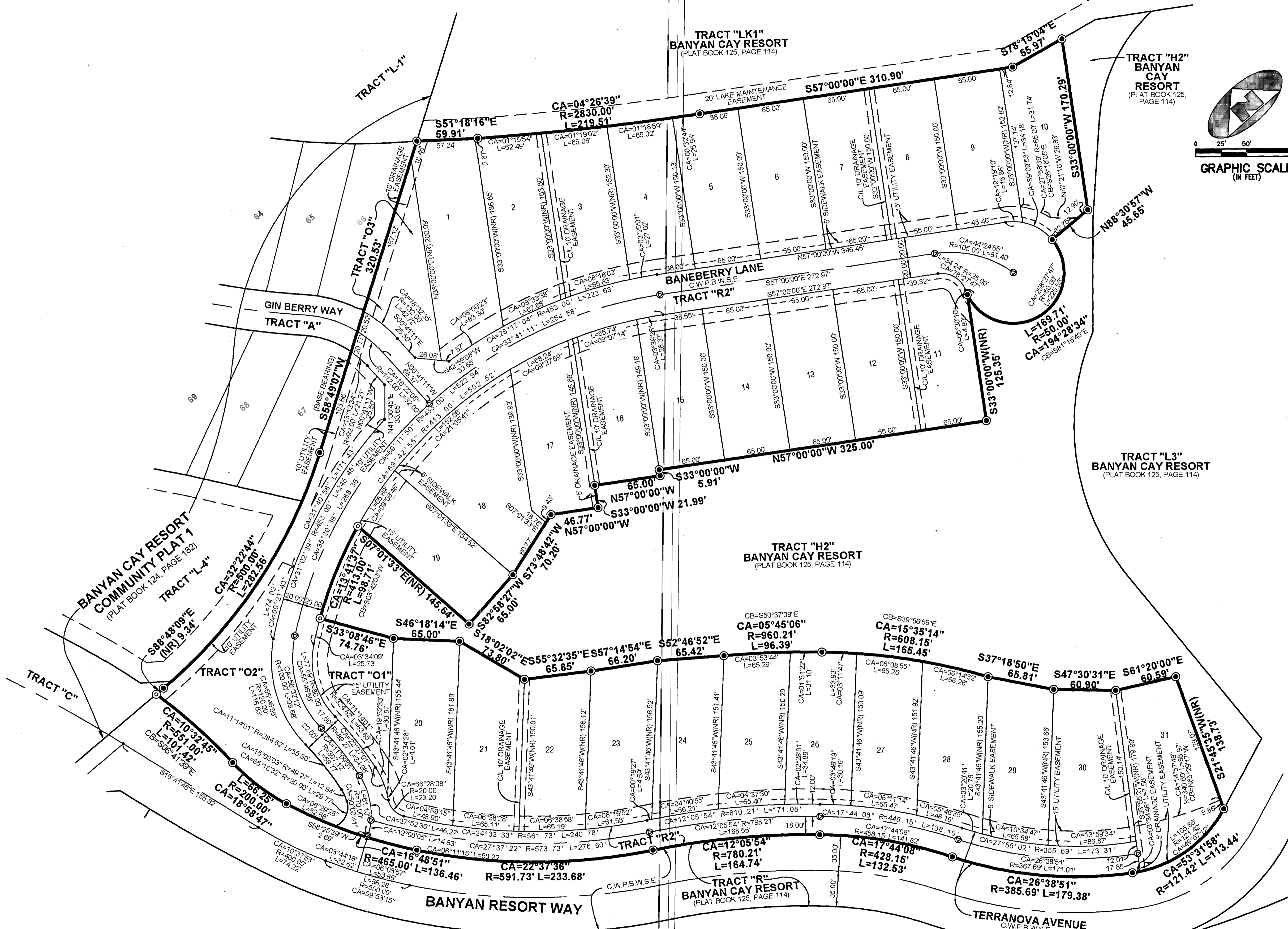


BANYAN CAY RESORT REPLAT OF TRACT "L2"
BEING A REPLAT OF TRACT "L2", BANYAN CAY RESORT, AS RECORDED IN PLAT BOOK 125, PAGE 114, PUBLIC RECORDS, PALM BEACH COUNTY, FLORIDA, AND LYING IN SECTIONS 7 AND 8, TOWNSHIP 43 SOUTH, RANGE 43 EAST, CITY OF WEST PALM BEACH, PALM BEACH COUNTY, FLORIDA



LEGEND

⊙	DENOTES A SET PERMANENT REFERENCE MONUMENT IRON ROD AND CAP STAMPED "PRM LB 7344"	C.W.P.B.W.S.E.	DENOTES A CITY OF WEST PALM BEACH WATER AND SEWER EASEMENT
⊙	DENOTES A SET PERMANENT REFERENCE MONUMENT NAIL & WASHER STAMPED "PRM LB 7344"	L	DENOTES ARC LENGTH DISTANCE
⊙	DENOTES A SET PERMANENT REFERENCE MONUMENT NAIL AND WASHER STAMPED "PCP LB 7344"	LCB	DENOTES LONG CHORD BEARING
CA	DENOTES CENTRAL ANGLE	(NR)	DENOTES A NON RADIAL LINE
C/L	DENOTES A CENTERLINE	O.M.E.	DENOTES AN OVERHANG AND MAINTENANCE EASEMENT
		R	DENOTES RADIUS DISTANCE

SURVEYOR'S NOTES

1. THE BEARING BASIS (BASE BEARING), AS SHOWN HEREON, IS BASED ON THE PLATTED BEARING OF S58°49'07"W, ALONG THE NORTH LINE OF TRACT "L2", BANYAN CAY RESORT, AS RECORDED IN PLAT BOOK 125, PAGE 114, AS SHOWN HEREON, AND ALL OTHER BEARINGS ARE RELATIVE THERETO.
2. IN THOSE INSTANCES WHERE UTILITY OR DRAINAGE STRUCTURES ARE CONSTRUCTED IN CONFLICT WITH THE PLATTED PERMANENT CONTROL POINT POSITION STRADDLERS MONUMENTED AS PERMANENT CONTROL POINTS WILL BE SET TO REFERENCE THE PLATTED POSITION.
3. LINES THAT INTERSECT CURVES ARE RADIAL UNLESS OTHERWISE NOTED.
4. THIS INSTRUMENT WAS PREPARED BY STEPHEN L. SHIRLEY, PROFESSIONAL SURVEYOR AND MAPPER NO. 3918, IN AND FOR THE OFFICES OF ASSOCIATED LAND SURVEYORS, INC., 3200 SUMMIT BLVD #19717 WEST PALM BEACH, FL 33416

ASSOCIATED LAND SURVEYORS, INC.
3200 SUMMIT BLVD #19717
WEST PALM BEACH, FL 33416
PHONE: (561) 848-2102 FAX: (561) 844-9659
LB NO. 7344 EMAIL: als@alssurvey.net



SCALE: 1"=50'	WO.NO.: P1302.A
DWN: BLS	SHEET 2 OF 2